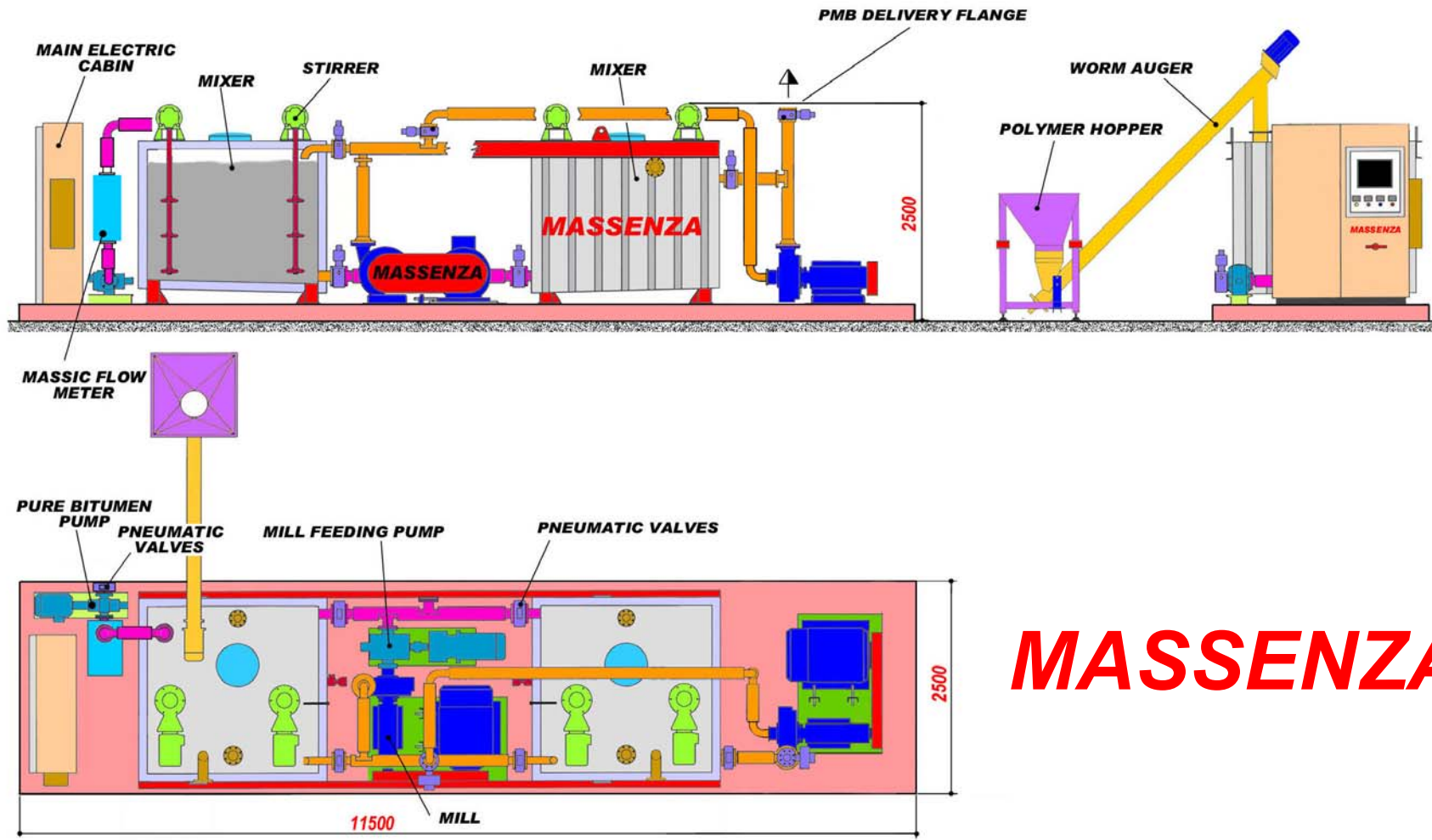


**PMB PRODUCTION PLANT
TYPE
"SUPER CHALLENGER-2"**



MASSENZA

**PMB PRODUCTION PLANT
TYPE
“SUPER CHALLENGER-2”**



BITUMEN LOADING :

BITUMEN PUMP

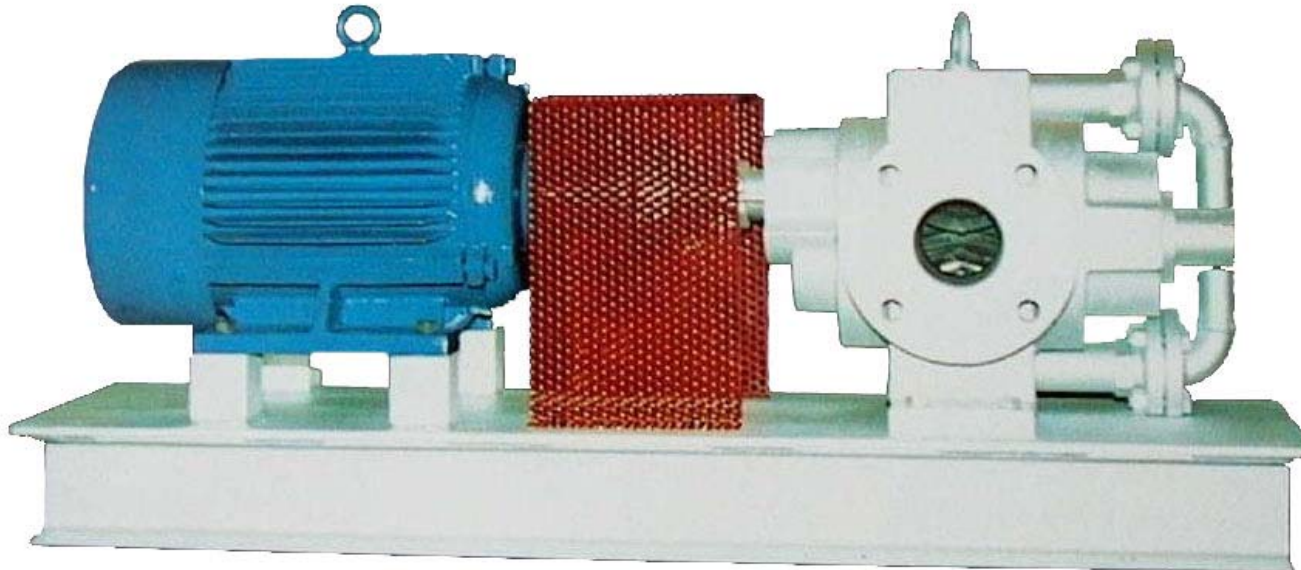
N°1 VOLUMETRIC GEAR PUMP

- DELIVERY 35.000 l/h / 60.000l/h

- BUILT-IN BY-PASS VALVE, JACKETED

- N°2 DN80 / DN100 FLANGES – PN16

*- COUPLED TO ELECTRIC MOTOR 11 kW / 15 kW , 50 HZ
4 POLES WITH FLEXIBLE COUPLING*



POLYMER LOADING :

SCREW FEEDER

N°1 TUBULAR SCREW CONVEYOR

- *DELIVERY 9000 lt/h*
- *DIAMETER 168 mm*
- *45° INCLINATION*
- *600 LITRES HOPPER CAPACITY*
- *TOP LOADING AREA PROTECTED BY SCREEN AND TILT- UP COVER*
- *ELECTRIC MOTOR 3 kw – 50 HZ – 4 POLES WITH GEAR REDUCER RATIO 1:10 MOUNTED ON THE TOP OF THE SCREW*
- *LOADING CELL SYSTEM WITH LOSS IN WEIGHT SOFTWARE MANAGED THROUGH PLC*



MIXERS :

N°2 MIXERS

- SQUARE SECTION
- GEOMETRICAL CAPACITY 5,8 cu.m.- WORKING CAPACITY 5,0 cu.m.
- EXTERNAL COILS FOR HOT OIL HEATING
- MANUAL HOT OIL SECTIONING VALVES
- ROCK WOOL INSULATION – 100 mm. THICK – COVERED BY 1mm THICKNESS GALVANISED STEEL SHEET
- ONE MANHOLE DIAMETER 500 mm.
- EACH MIXER IS EQUIPPED WITH (2) TWO VERTICAL SHAFT STIRRERS WITH 3 BLADED PROPELLERS EACH DRIVEN BY AN ELECTRIC MOTOR 7,5 kw 50 Hz – 4 POLES WITH GEAR REDUCER 2:1 RATIO – BOTTOM BEARING SELF-ALIGNMENT TYPE.



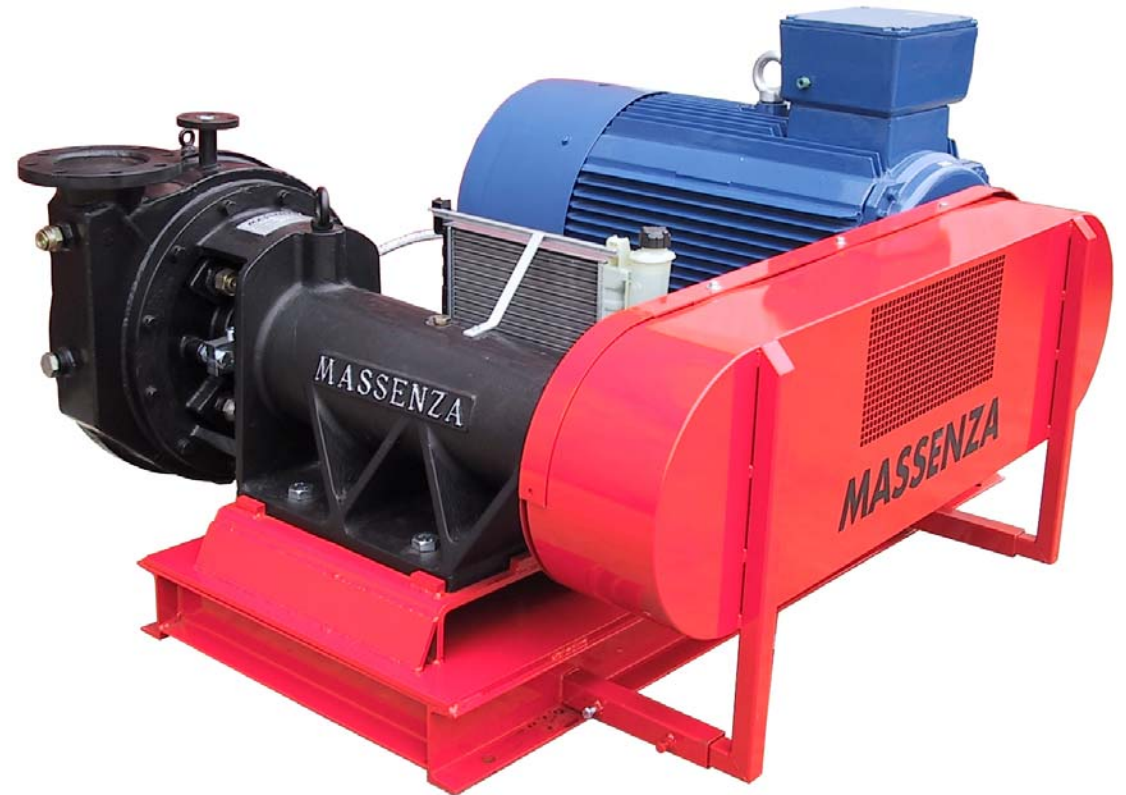
MEMBRANE LEVEL STATE :

- 1 EACH MIXER
- FOR HIGH TEMPERATURES
- WITH OUTPUT SIGNAL 4-20 mA.
- FLANGE INSTALLATION ON THE SIDE WALL OF THE MIXER
- COVER PROTECTION

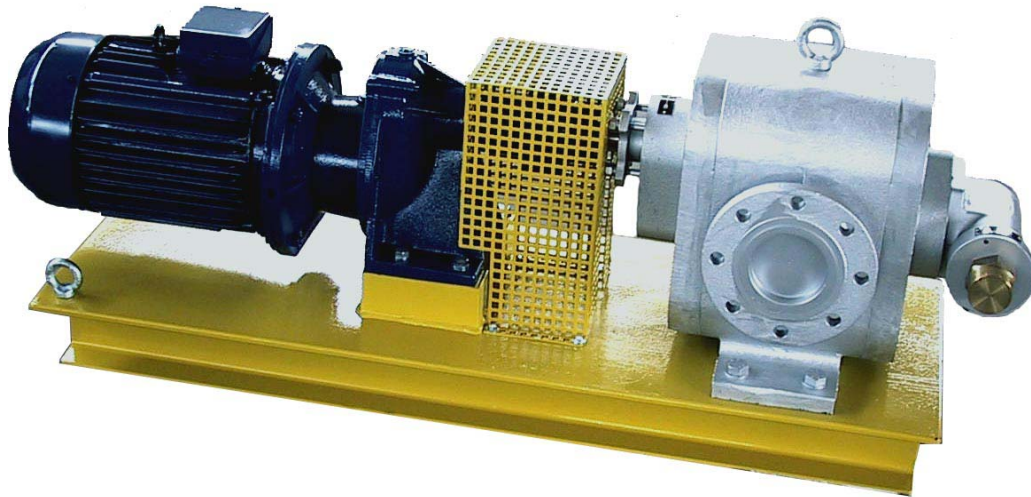
HOMOGENIZER MILL :

N°2 MASSENZA MILL TYPE "PMB460"

- DRIVEN BY AN ELECTRIC MOTOR 160 Kw – 50Hz – 4 POLES
- TRANSMISSION BY (8) EIGHT TRAPEZOIDAL BELTS, PULLEY
- BELT TENSIONING ADJUSTMENT BY SLIDING BASEMENT
- SUCTION AND DISCHARGE FLANGES DN150 PN16
- FLANGES FOR HEATING CONNECTION DN25 – PN16
- MAXIMUM OPERATING TEMPERATURE 230°C
- MAXIMUM PRESSURE ON JACKET HEATING: 8 bar
- MANUAL HOT OIL SECTIONING VALVES
- ROTATING SPEED OF MACHINE SHAFT 1.800 r.p.m.
- SEAL WITH CLOSE LOOP COOLING SYSTEM, CONTROLLED BY THERMOSTAT AND FLOW SENSOR
- HAND WHEEL GAP ADJUSTMENT WITH GAP INDICATION



MILL FEEDING PUMP :



N°1 GEAR PUMP

- DELIVERY UP TO 75.000 l/h AT 1900 r.p.m.
- BUILT-IN BY-PASS VALVE
- JACKETED
- N°2 FLANGES DN 100 – PN16 COUPLED TO ELECTRIC MOTOR 11Kw – 50 Hz – 4 POLES AND GEAR REDUCER WITH FLEXIBLE COUPLING

PNEUMATIC VALVES :



FULL BORE BALL TYPE VALVES

- DN100 ON SUCTION LINE
- DN80 ON DELIVERY
- ALL PNEUMATICALLY OPERATED
- BOX WITH MICRO FOR POSITION SENSOR
- SPECIAL SEALING FOR HIGH TEMPERATURES

STIRRER ASSEMBLY :

- WITH ELECTRIC MOTOR 7.5 KW
- 90° AXIS ANGLE GEAR REDUCER BOX, 1.2 RADIO
- COUPLING BELL AND SHAFT WITH 3 HIGH SPEED AUGER FOR AGITATION
- BOTTOM BEARING SUPPORT OF THE SHAFT



FLOW METER ASSEMBLY :



JACKETED MASS FLOW METER MEASURING SYSTEM, UTILISING CORIOLIS PRINCIPLE. IT MEASURE THE MASS FLOW RATE DIRECTLY, INDEPENDENT OF ANY OTHER PARAMETERS OF THE FLUID, SUCH AS DENSITY, TEMPERATURE, PRESSURE, VISCOSITY, CONDUCTIVITY AND FLOW PROFILE. INSTALLED WITH SPECIAL SUPPORT FRAME AND FLEXIBLE PIPING TO AVOID REFLECTED RESONANT ENERGY FROM OUTSIDE SOURCE AND EQUIPPED WITH HOT OIL JACKETED PIPING TO OVERCOME COLD BITUMEN OBSTRUCTION PROBLEM. FLANGE CONNECTION DN80, PN16, THE QUANTITY ON THE DISPLAY CAN BE SET EITHER IN KGS OR LITRES

MAIN ELECTRIC CABINET :

CABINETS EQUIPPED WITH AIR VENTS,
STEEL COVER FOR THE WHOLE PANEL
BOARD AS PROTECTION AT TRANSPORT
AND TO BE USED AS WEATHERPROOFED
ROOF DURING PRODUCTION

PANEL MOUNTED INSTRUMENTS AND
APPARATUS:

GENERAL KNIFE SWITCH MANEUVER
EMERGENCY MUSHROOM SWITCH
VOLTMETER + VOLTMETER COMMUTATOR
FREQUENCY METER
AMPERE METER

TOUCH SCREEN TERMINAL:

- SYNOPTIC OF THE PLANT WITH THE INDICATION OF THE STATUS OF VALVES AND MOTORS, THE VALUE OF TEMPERATURES AND LEVELS
- CONTROL VALVES AND MOTORS IN MANUAL MODE
- SET THE TEMPERATURES, LEVELS, MILL CURRENT, QUANTITY OF BITUMEN, NUMBER OF CHANGE OVER, POLYMER PERCENTAGE (ONLY IF LOADING CELL WEIGHTING SYSTEM IS INSTALLED)
- MANAGE THE AUTOMATIC CYCLE.;
- MANAGE THE ALARMS AND THE HISTORICAL OF THE ALARMS



OPTIONAL :

- *VOLUMETRIC MICRO-BATCH FEEDER FOR SULPHUR POWDER*



- ◆ *AROMATIC OIL INJECTION SYSTEM COMPLETE WITH PUMP AND LITER COUNTER*



- *DOUBLE POLYMER FEEDING AND/OR BIG-BAGS EMPTY SYSTEM.*

